



The Fourth Annual Workshop on Mathematics in Medicine, Vienna 2018

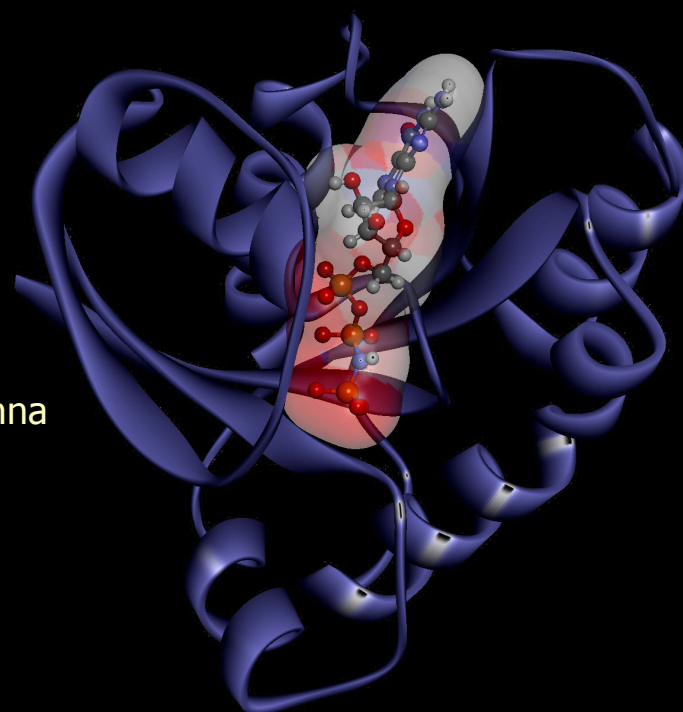
## Mathematical Models in Cancer

July 20 - July 21, 2018

Location: Fak. Math. Univ. Wien, Oskar-Morgenstern-Platz, A1090

### Speakers:

Sebastien Benzekry	INRIA Bordeaux-Sud Ouest
Michael Bergmann	Medical University of Vienna
Jean Clairambault	INRIA & LJLL, Sorbonne Université, Paris
Francesca Cordero	University of Torino
Jana Gevertz	College of New Jersey
Florian Grebien	Ludwig Boltzmann Institute for Cancer Research, Vienna
Ronald Kefurt	Medical University of Vienna
Anna Kicheva	IST Austria
Ursula Klingmüller	German Cancer Research Center (DKFZ)
Alexander Lorz	KAUST & LJLL, Sorbonne Université, Paris
Philip Maini	Oxford University
Marius Mayerhöfer	Medical University of Vienna / MSKCC New York
Diane Peurichard	INRIA & LJLL, Sorbonne Université, Paris
Jesús M. Seoane	Universidad Rey Juan Carlos



KRAS protein structure  
Image courtesy of the National Cancer Institute

### Organizers:

Michael Bergmann	Medical University of Vienna
Marie Doumic Jauffret	INRIA & WPI
Doron Levy	University of Maryland
Norbert J. Mauser	WPI c/o Univ. Wien

### Goals:

The workshop will provide mathematicians, experimentalists, and clinicians, an opportunity to discuss recent advances in mathematical biology and medicine.

The meeting will be used to identify new problems that require innovative mathematical approaches and to foster new collaborations.

### Partial funding provided by:

WPI, INRIA, ERC by project SKIPPERAD, FWF by DK "Nonlinear PDEs", SFB "Taming Complexity in PDEs"

For more information: [www.wpi.ac.at](http://www.wpi.ac.at)  
[ramona.bluma@univie.ac.at](mailto:ramona.bluma@univie.ac.at)